

Installation and Operating Instructions

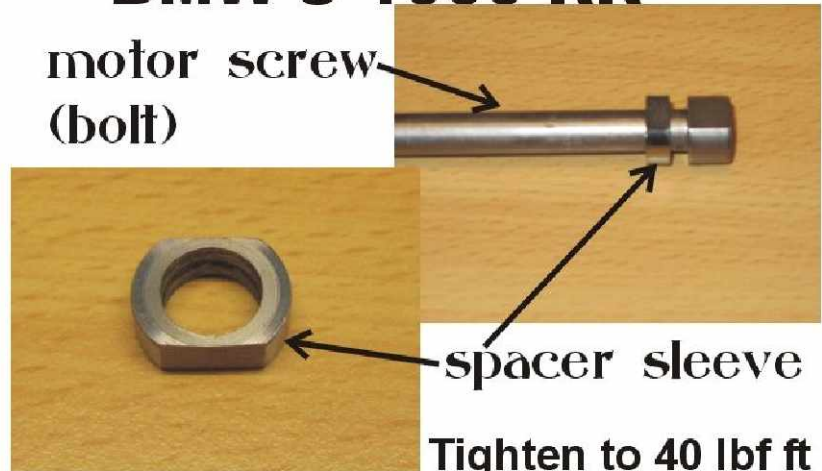
Step 1



Loosen the bolt from the upper fixing point of the engine and pull it out. (pic1)

BMW S 1000 RR

motor screw
(bolt)



Tighten to 40 lbf ft

Step 2



*Now push the bolt through the achsel from the other side, riding direction right side, (pic2)
Some models do not need to change bolt direction, eg CBR 1000 RR-Sc57.*

Step 3



Now take the delivered nut with thread and place it into the frame opening, (pic3). The original nut is no longer needed.

Installation and Operating Instructions

Step 4



Now tighten the bolt into the nut with the manufactures given torque, (pic4).

With some bikes the nut could emmerge about 20mm out of the frame after fully tightening, eg CBR 1000 RR- Sc57.

Step 5



Now place the stand in its position oposite the opening on the bike, use the right hand and foot for balancing, if you have difficulties in incerting the bolts from the stand, then loosen the bottom screw, (pic8)

Also make sure that you have greased the two bolts alittle before hand.

Step 6



Once you have the stand fully into its position, you will notice roughly 20mm-30mm between the surface and the Stand, (pic6) this is to enable a quick and easy fitting and removing.

Installation and Operating Instructions

Step 7



Once you have fitted the stand into its position, you can now let the bike fall to the left side same as if you were using the normal side stand of your bike (pic7).

Step 8



Now the bike is leaning to the left side, you can tighten the bottom nut, (pic8)

Step 9



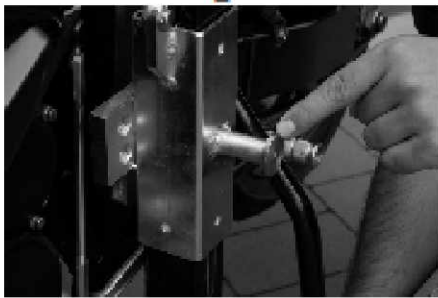
Now pickup your bike into the straight position holding the left handelbar and at the same time press the hydrolic handelbar on the stand down until it rests into position, pic(9 & 10)

Step 10



Installation and Operating Instructions

Step 11



(Pic11) shows the locked position after pressing the hydraulic handel down (you will hear it click)

Step 12



To loosen and let the bike down, you now press the hydrolic again to releave the pressure and at the same time with the left hand you pull the lock bolt out and the hydrolic arm moves slowly up.

Step 13



As soon as the hydrolic arm is in the normal position you can now slowly remove the stand from the bike. If you have difficulties in removeing, then just raise the bike up and down 4 or 5 and this will help, the stand will fit to the bike. (Pic 12 & 13).

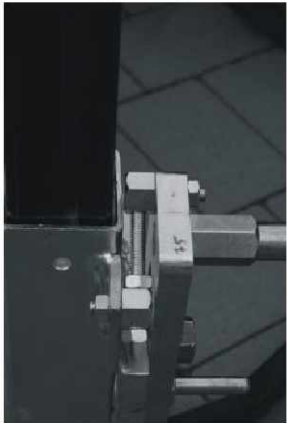
Technical Information

Picture A



Always be and to make sure that the M 16 nut has enough torque from 180 to 190 NM.

Picture B



On this picture you can see the screwbar which enables you to change the angle of the adapterplate if necessary, this then changes the angle of the bike.

Picture C



With the bottom bolt you can alter the distance between the stand and the bike, if wished.

Picture D



Shows the open position of the safety lock on the stand.

Customer Information

More and more customers are using with satisfaction our products and for those who have not seen or heard about them, we would now like to give them the opportunity to do this.

We would be very grateful for any pictures of you and your bike with our stand, it does not matter if your bike is fully stripped or not as long as it is fitted onto the stand and any feedback about your experience with it.

We would also like to take the opportunity in asking for the allowance to show any pictures or feedback info on our Homepage.

www.bursig.com

*Kind Regards
Sebastian Bursig & Team*

